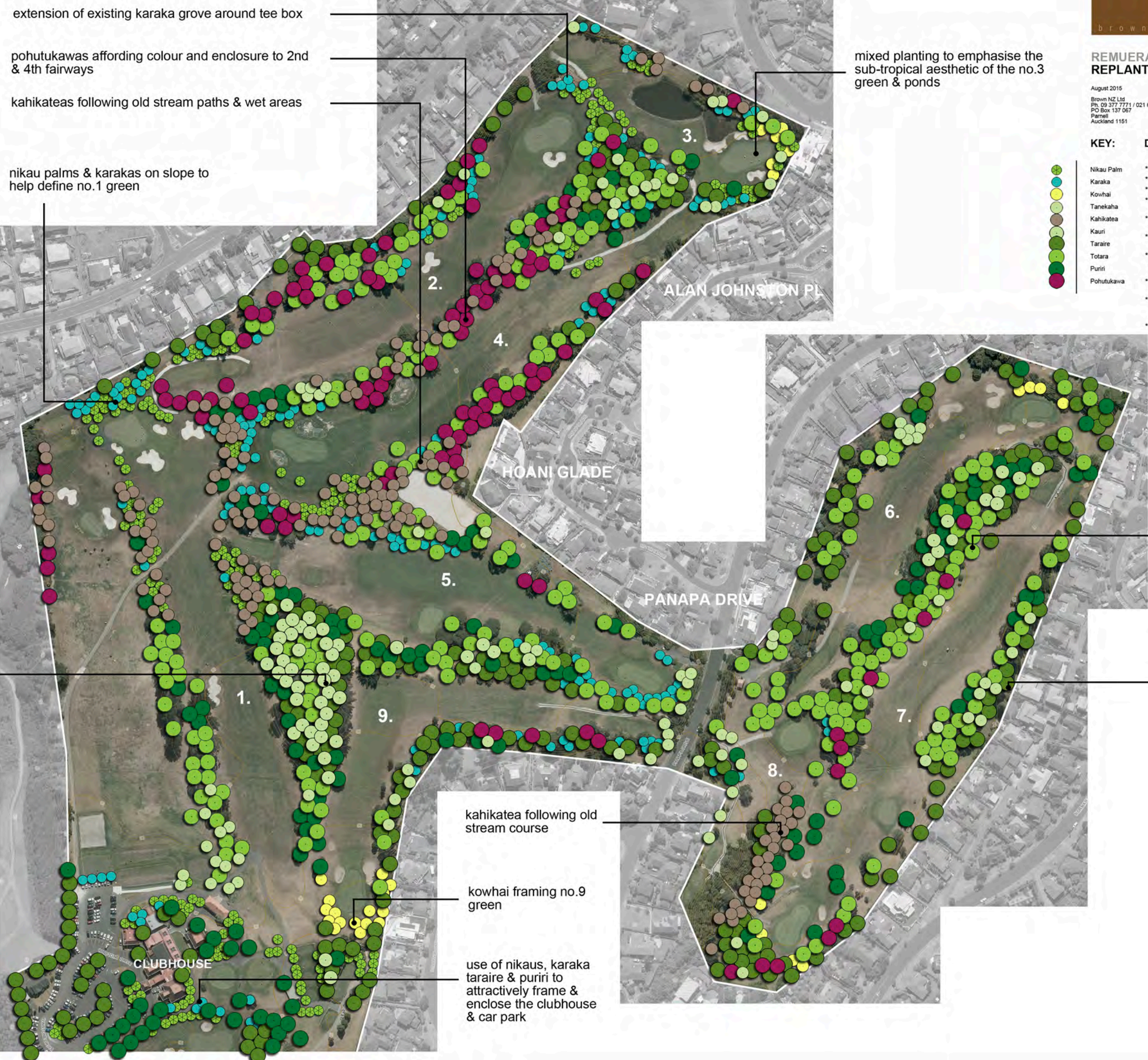


August 2015
Brown NZ Ltd
Ph: 09 377 7771 / 021 646 181
PO Box 137 067
Parnell
Auckland 1151

- KEY:**
- Nikau Palm
 - Karaka
 - Kowhai
 - Tanekaha
 - Kahikatea
 - Kauri
 - Taraire
 - Totara
 - Puriri
 - Pohutukawa
- DESIGN PRINCIPLES:**
- use of native plant species
 - sustainable & robust species mix
 - minimisation of impact on neighbours
 - strong definition of tees, fairways, ball landing points & greens
 - use of planting to assist with the perception of distance on the approach to green
 - use of smaller species north of greens & spatial separation to limit over-shadowing
 - use of plant species to emphasise the varied character of the course & the different nature of individual holes: variety & diversity
 - use of key species to create landmarks & reference points
 - variation of the spatial experience - enclosure & openness - linked to teeing off, approach shots & use of greens, together with the terrain
 - respect for the existing design of the course



extension of existing karaka grove around tee box

pohutukawas affording colour and enclosure to 2nd & 4th fairways

kahikateas following old stream paths & wet areas

nikau palms & karakas on slope to help define no.1 green

mixed planting to emphasise the sub-tropical aesthetic of the no.3 green & ponds

kauri grove on knoll / ridge

extensive replanting to define no.6 & 7 fairways & intervening slope - mixed species

smaller tree species located closer to private properties with larger species employed in the centre of the course

kahikatea following old stream course

kowhai framing no.9 green

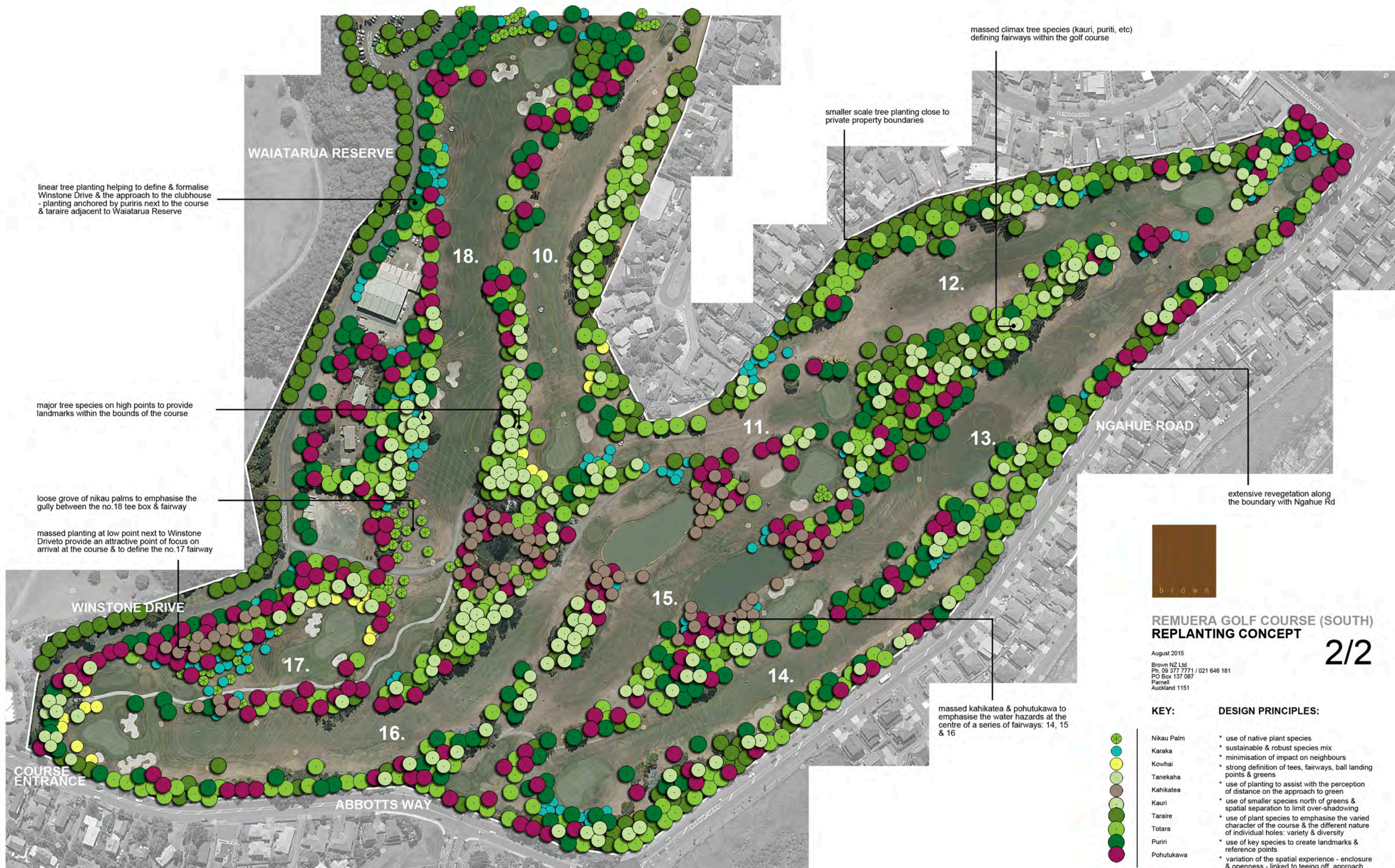
use of nikaus, karaka taraire & puriri to attractively frame & enclose the clubhouse & car park

CLUBHOUSE

ALAN JOHNSTON PL

HOANI GLADE

PANAPA DRIVE



linear tree planting helping to define & formalise Winstone Drive & the approach to the clubhouse - planting anchored by puriris next to the course & taraire adjacent to Waiatarua Reserve

major tree species on high points to provide landmarks within the bounds of the course

loose grove of nikau palms to emphasise the gully between the no. 18 tee box & fairway

massed planting at low point next to Winstone Drive to provide an attractive point of focus on arrival at the course & to define the no. 17 fairway

smaller scale tree planting close to private property boundaries

massed climax tree species (kauri, puriri, etc) defining fairways within the golf course

extensive revegetation along the boundary with Ngahue Rd

massed kahikatea & pohutukawa to emphasise the water hazards at the centre of a series of fairways: 14, 15 & 16



REMUERA GOLF COURSE (SOUTH) REPLANTING CONCEPT

August 2015
Brown NZ Ltd
Ph. 09 377 7771 / 021 646 181
PO Box 137 067
Parnell
Auckland 1151

2/2

KEY:

- Nikau Palm
- Karaka
- Kowhai
- Tanekaha
- Kahikatea
- Kauri
- Taraire
- Totara
- Puriri
- Pohutukawa

DESIGN PRINCIPLES:

- * use of native plant species
- * sustainable & robust species mix
- * minimisation of impact on neighbours
- * strong definition of tees, fairways, ball landing points & greens
- * use of planting to assist with the perception of distance on the approach to green
- * use of smaller species north of greens & spatial separation to limit over-shadowing
- * use of plant species to emphasise the varied character of the course & the different nature of individual holes: variety & diversity
- * use of key species to create landmarks & reference points
- * variation of the spatial experience - enclosure & openness - linked to teeing off, approach shots & use of greens, together with the terrain
- * respect for the existing design of the course